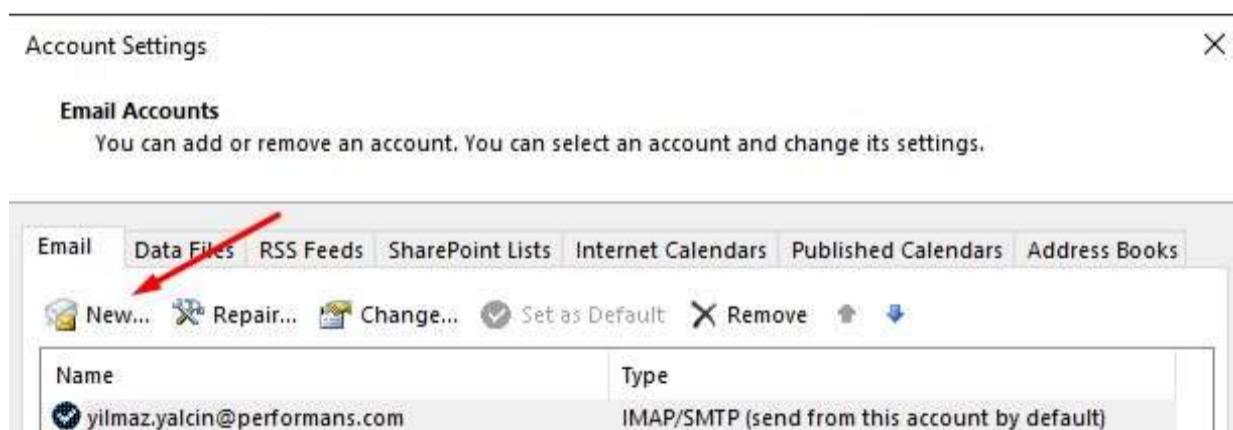
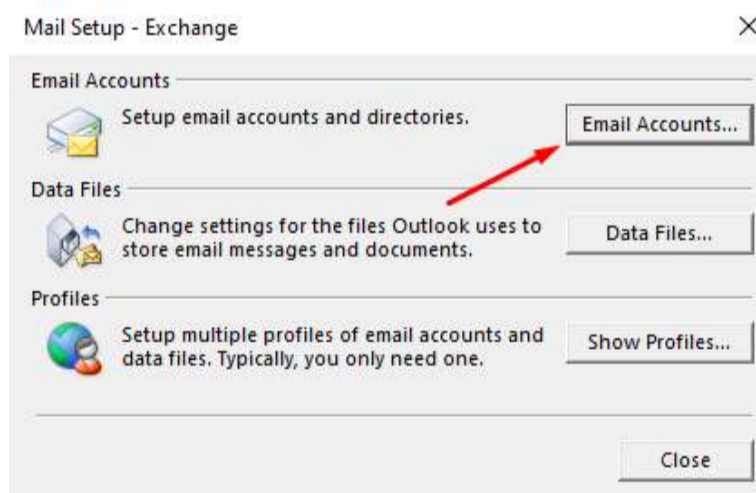


# Microsoft Outlook Mail Ayarlarının Yapılandırılması



Add Account ✕

**Auto Account Setup**  
Manual setup of an account or connect to other server types.

**Email Account**

Your Name:   
Example: Ellen Adams

Email Address:   
Example: ellen@contoso.com

Password:

Retype Password:   
Type the password your Internet service provider has given you.

**Manual setup or additional server types**

Add Account ✕

**Choose Your Account Type**

**Office 365**  
Automatic setup for Office 365 accounts

Email Address:   
Example: ellen@contoso.com

**POP or IMAP**  
Advanced setup for POP or IMAP email accounts

**Exchange ActiveSync**  
Advanced setup for services that use Exchange ActiveSync

Altresimde ki bilgiler Örnek teşkil etmektedir. Lütfen burayı doldururken size vermiş olduğumuz güncel bilgilerinizi giriniz.

“More Settings” tıklayınız

**Add Account**

**POP and IMAP Account Settings**  
Enter the mail server settings for your account.

**User Information**  
Your Name: Ornek Isim  
Email Address: isim@ornek.com

**Server Information**  
Account Type: POP3  
Incoming mail server: mail.ornek.com  
Outgoing mail server (SMTP): mail.ornek.com

**Logon Information**  
User Name: isim@ornek.com  
Password: \*\*\*\*\*  
 Remember password  
 Require logon using Secure Password Authentication (SPA)

**Test Account Settings**  
We recommend that you test your account to ensure that the entries are correct.  
Test Account Settings ...  
 Automatically test account settings when Next is clicked

**Deliver new messages to:**  
 New Outlook Data File  
 Existing Outlook Data File  
Browse

**More Settings ...**

< Back Next > Cancel Help

**Internet Email Settings**

General **Outgoing Server** Advanced

My outgoing server (SMTP) requires authentication  
 Use same settings as my incoming mail server  
 Log on using  
User Name:   
Password:   
 Remember password  
 Require Secure Password Authentication (SPA)  
 Log on to incoming mail server before sending mail

OK Cancel

**Internet Email Settings**

General Outgoing Server **Advanced**

**Server Port Numbers**  
Incoming server (POP3): 110 Use Defaults  
 This server requires an encrypted connection (SSL/TLS)  
Outgoing server (SMTP): 587  
Use the following type of encrypted connection: None

**Server Timeouts**  
Short Long 1 minute

**Delivery**  
 Leave a copy of messages on the server  
 Remove from server after 14 days  
 Remove from server when deleted from 'Deleted Items'

OK Cancel